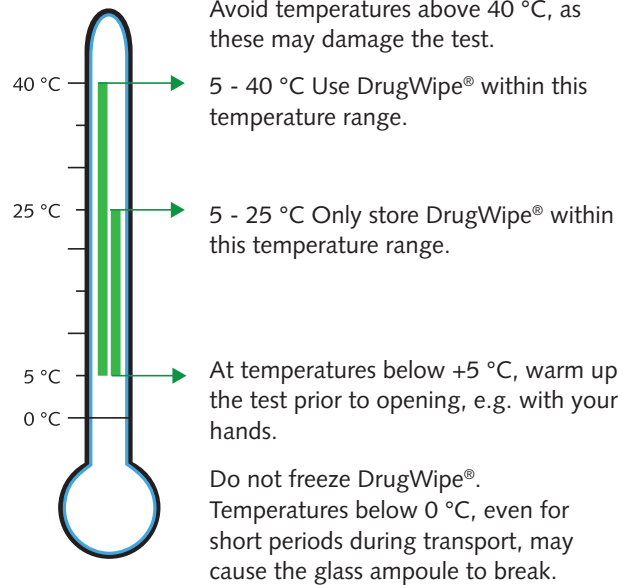


Storage and Use

If using the test in the rain or snow, ensure that DrugWipe® 5 S is protected from moisture.

Dispose of used and expired tests with other non-recyclable waste. Please comply with your local regulations for waste disposal.

Incorrect storage conditions, such as high temperatures or frost, will damage the test.



Quality Control

DrugWipe® 5 S has an integrated control line (CL). The control line indicates that the test is fully functional and that the screening test has been performed correctly.

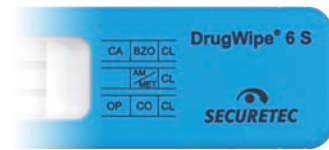
Please observe any additional quality control regulations that apply in your institution or establishment.

Cross Reactions

We have analysed the substances that cross-react with DrugWipe® 5 S in our laboratory. We can provide you with information about possible cross reactions on request.

For more information for registered users, see: www.securetec.net

Other DrugWipe® Products



Saliva



Sweat



Surfaces



Surfaces,
sweat,
saliva

For the detection of cannabis, opiates, cocaine, amphetamines/methamphetamines/ecstasy, methadone, ketamine and benzodiazepines.



DrugWipe® 5 S Instructions for Use

Saliva test for the detection of

- Cannabis
- Opiates
- Cocaine
- Amphetamines/methamphetamines

Applications

DrugWipe® 5 S is intended to be used for drug screening by trained professionals (police officers, customs officials, qualified medical personnel, etc.). The test detects the relevant substances in saliva, indicating that the test subject has recently consumed or handled controlled substances (forensic application).

DrugWipe® 5 S is for single use only. The test detects cannabis, opiates, cocaine and amphetamines/methamphetamines (including MDMA/ecstasy). The measurement procedure delivers a preliminary result (screening procedure). Verification of the results is required, in particular if these are positive. Gas chromatography combined with mass spectrometry (GC/MS) is the preferred method with a broad substance spectrum.

Principle Behind the Test

DrugWipe® 5 S is an immunological quick screening test. The sample collector transfers the sample to the test strips, which contain drug-specific antibodies. If the sample contains drugs, they will bind to the antibodies.

The test starts as soon as you break the integrated glass and release the liquid. The liquid helps the drugs that are bound to the antibodies to migrate to the test line. The red test line is evaluated visually.

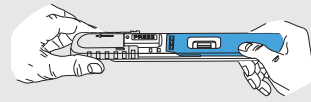
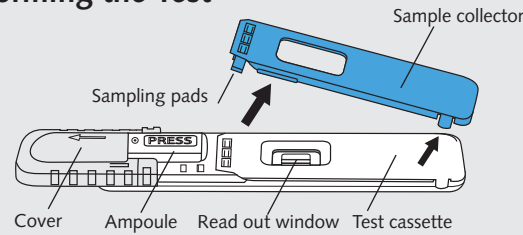
Package Contents

1 DrugWipe® 5 S saliva test

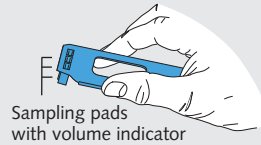
Read Before Performing the Test

1. Discard the test if the expiration date has been exceeded.
2. Discard the test if the packaging is damaged or contains any moisture, or if a control line already appears red.
3. Do not open the packaging until shortly before you intend to use the test.
4. We recommend that you wear disposable gloves to avoid contact with saliva.

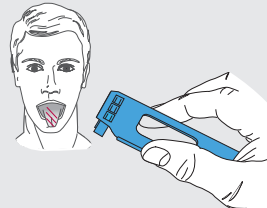
Performing the Test



1. Slide the cover in the direction of the arrow until you can read all of the word PRESS.

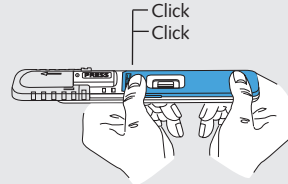


2. Remove the blue sample collector from the white test cassette. **Do not touch the sampling pads.**

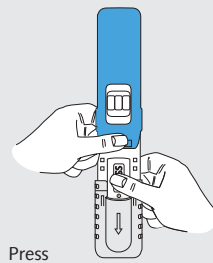


3. Ask the test subject to circle the inside of their mouth with their tongue 3 times. Then use the sample collector to wipe the saliva from the tongue or the inside of the cheek.

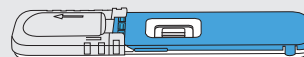
If the colour of the sampling pads changes from red to yellow, this indicates that a sample has been successfully collected.



4. Place the sample collector back on the test cassette. **The sample collector must slot into place with an audible double click.**



5. Hold the test cassette vertically with the ampoule at the bottom. Using your thumb, press hard on the word PRESS until the ampoule breaks. Continue to **hold the test cassette for a further 10 seconds as shown.**



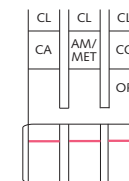
6. Leave the test undisturbed on a level surface. After 8 minutes, read the test result.

Test Evaluation

- In the case of strongly positive samples, a result may be visible after just 3 minutes.
- The test result can be read after 8 minutes.
- The result remains valid for up to 10 minutes after the end of the test.
- The test result is to be interpreted as positive even if the test lines only undergo a slight or incomplete colour change.
- Ensure that you have sufficient lighting when evaluating test results, e.g. by using a torch if necessary.

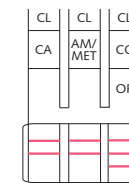
The read out window shows 1 or 2 drug groups and a control line for each test strip. The following abbreviations are used:

CA	cannabis (THC/marijuana/hashish)
AM	amphetamines
MET	methamphetamines (MDMA/ecstasy)
CO	cocaine (crack)
OP	opiates (heroin/morphine)
CL	control line



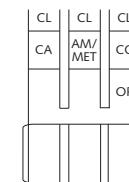
Negative result = no drugs consumed

All control lines must turn red in order for the test to be valid. The test is negative for the drugs for which the test line does not turn red.



Positive result = drugs consumed

All control lines must turn red in order for the test to be valid. The test is positive for the drugs for which the test line turns red.



Invalid result

The test is invalid if one or more control lines do not turn red. Repeat the analysis with a new DrugWipe® 5 S test.